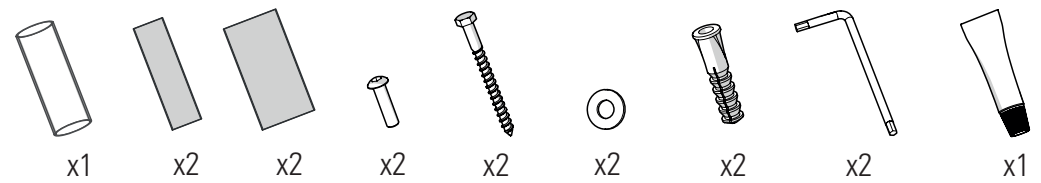
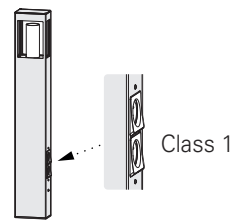
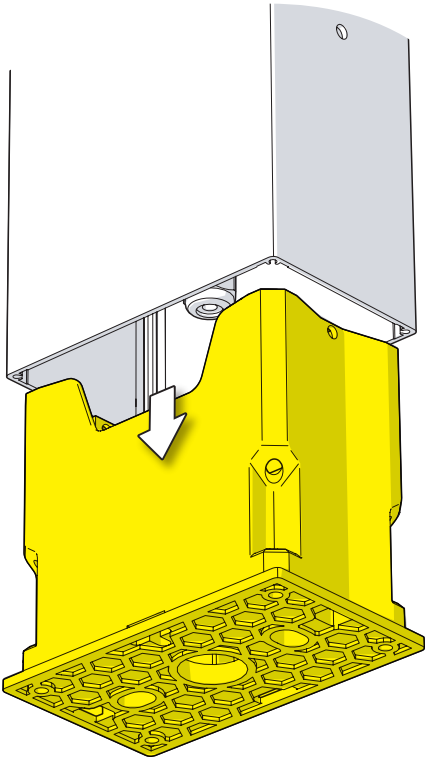


# Brick 2

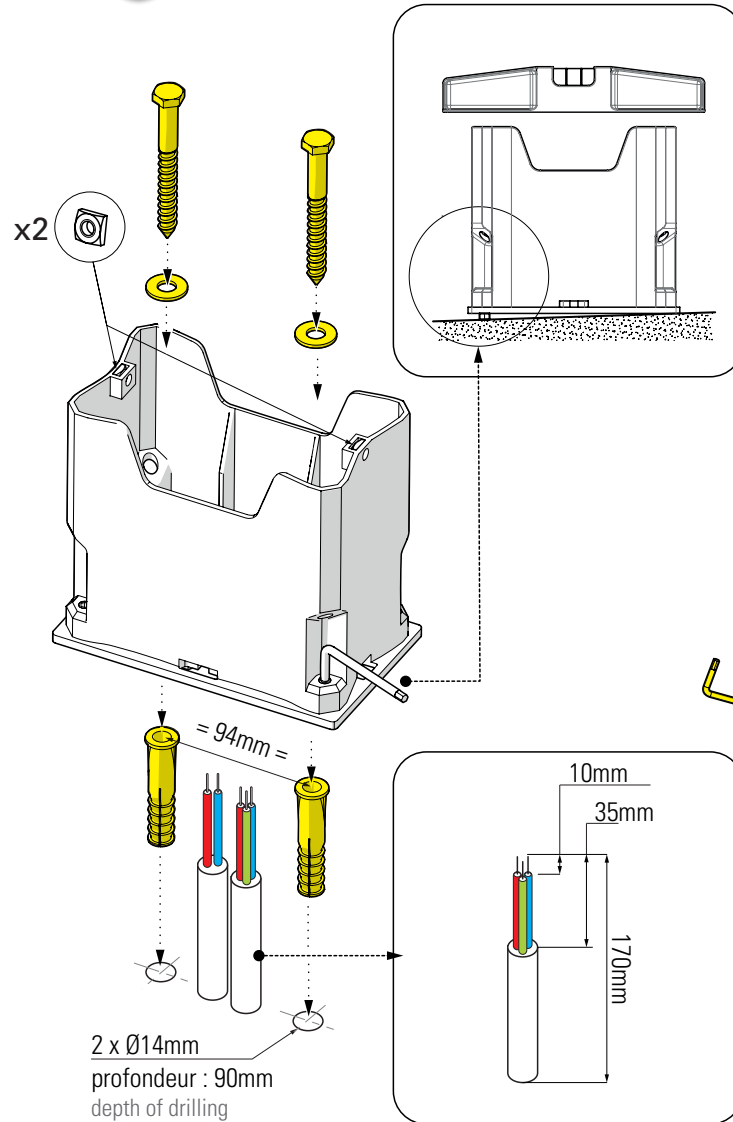
Class 2  
E27



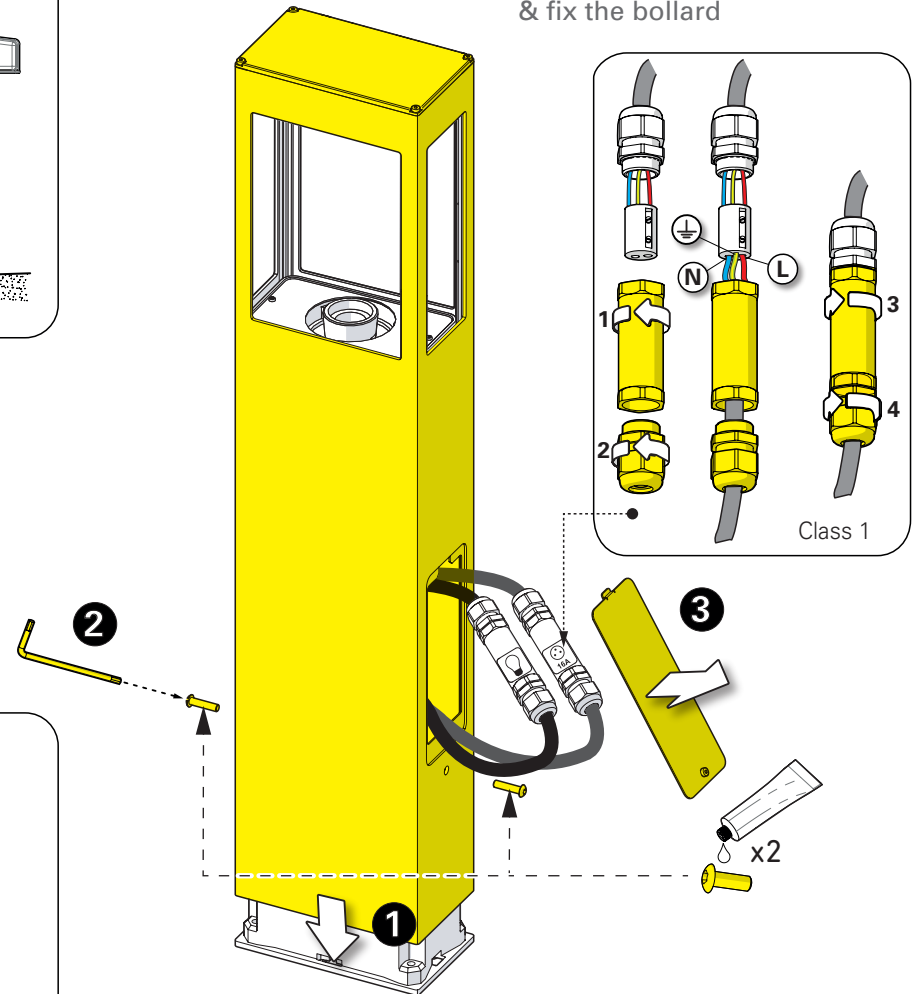
## 1 Retirer l'embase Remove the base



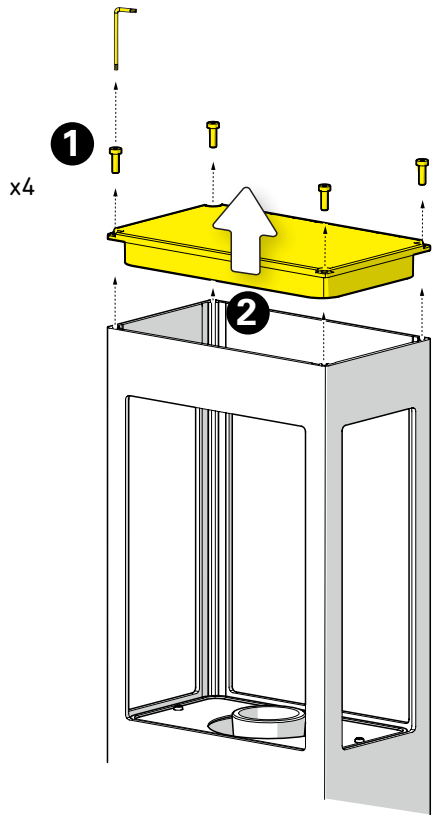
## 2 Fixation de la base au sol Fix the base to the ground



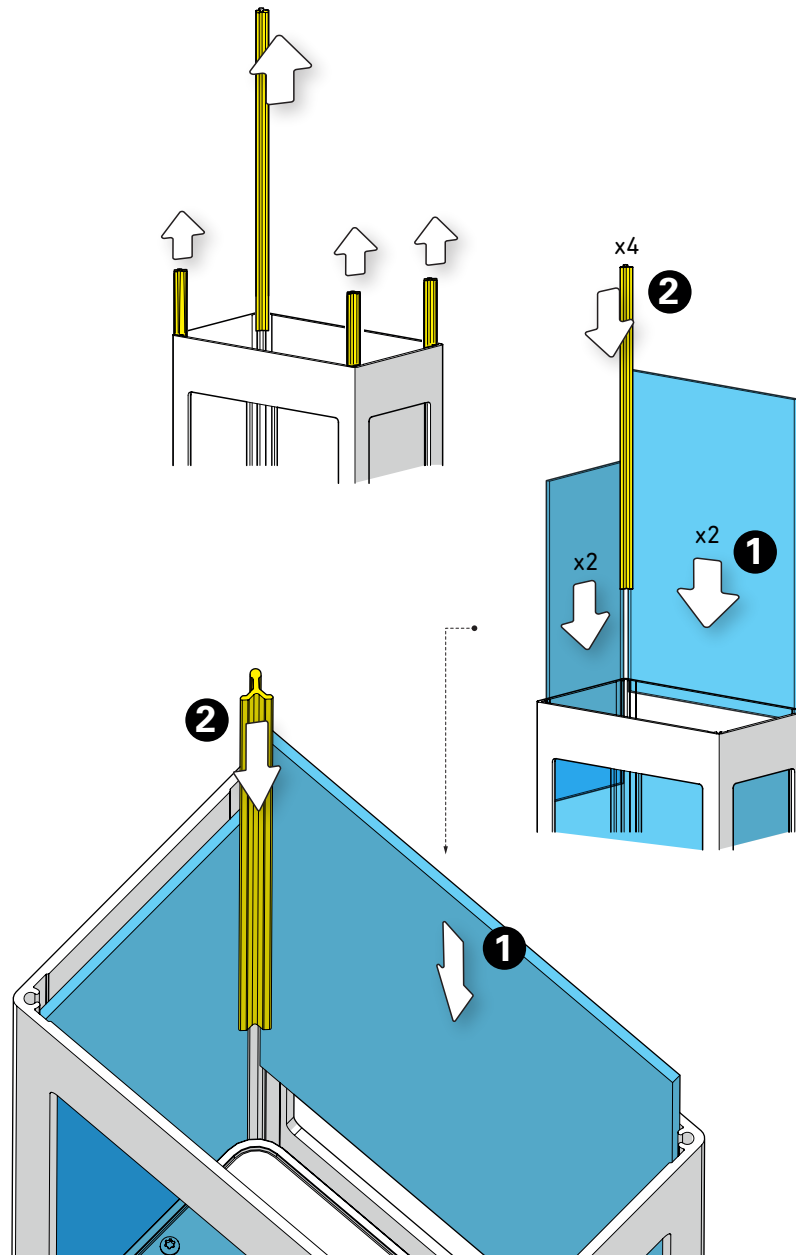
## 3 Raccordement électrique & fixation de la borne Connect electrical wires & fix the bollard



**4** Retirer le couvercle supérieur  
Remove the top cover



**5** Montage des verres & des profilés de maintien  
Install the glasses & maintaining profiles



**6** Montage de la lampe & du diffuseur  
Install the light-bulb & the diffuser

